

# Brass Turned Parts: Precision & Performance by Ok Engineers

Delivering world-class CNC machined brass components with uncompromising accuracy and reliability for demanding industrial applications.



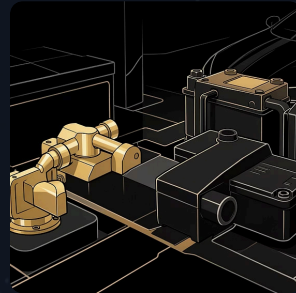
Made with **GAMMA**

# Why Brass Turned Parts Matter: Top 5 Commercial Applications



## Electrical & Electronics

CNC brass connectors and terminals with outstanding conductivity and corrosion resistance, used by global telecom leaders for high-speed data centres.



## Automotive

Precision brass valves and sensors in EV battery cooling systems, ensuring leak-proof, corrosion-resistant performance under thermal stress.



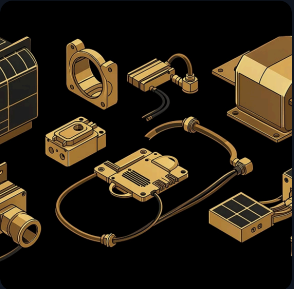
## Plumbing

Lead-free brass fittings and adaptors for hygienic water systems, meeting NSF/ANSI 61 standards in smart buildings.



## Aerospace

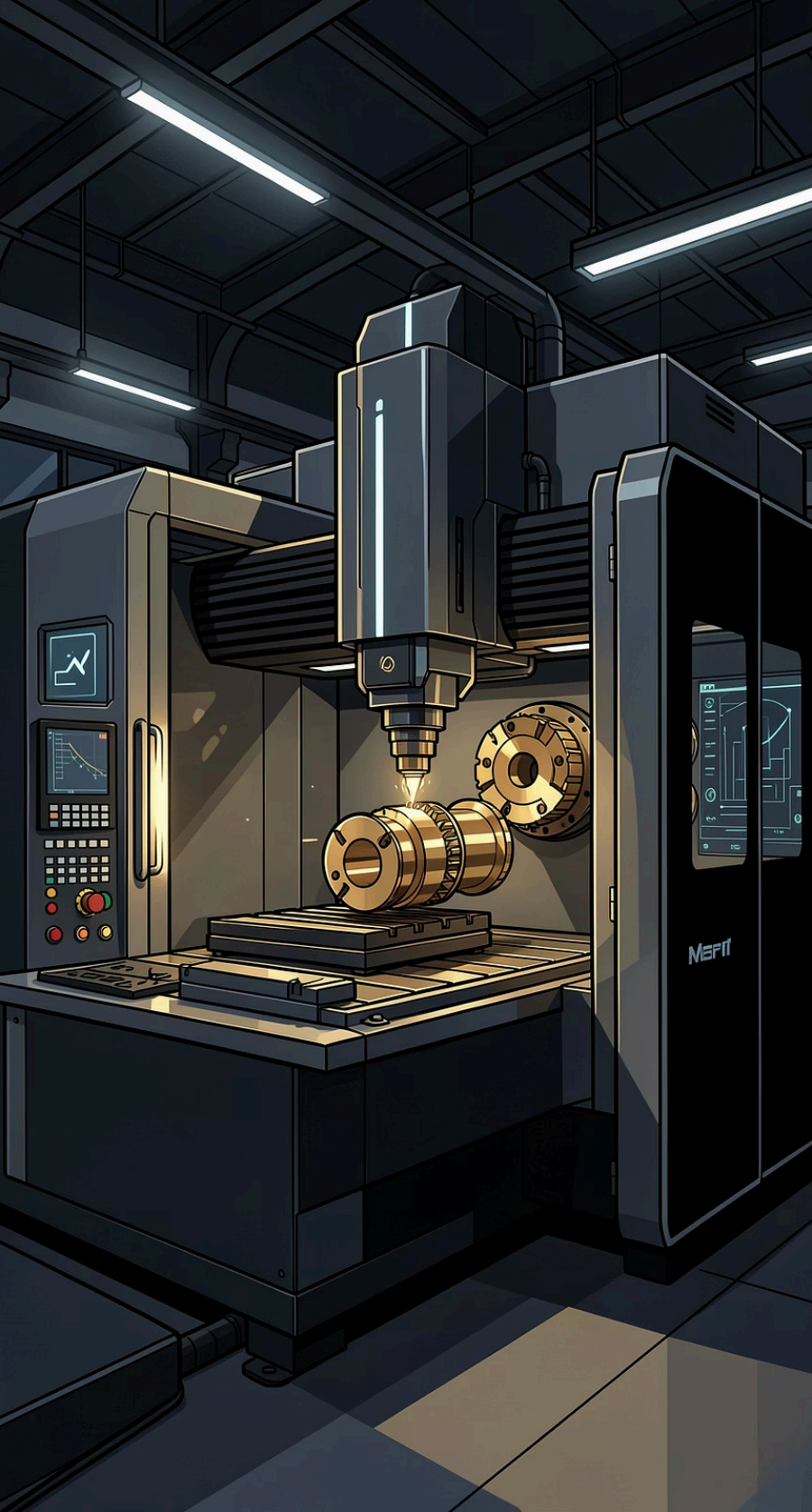
Custom brass fasteners and connectors engineered to AS9100 standards for satellite and hydraulic systems requiring extreme precision.



## Renewable Energy

Durable brass components in solar inverters and wind turbines, engineered for longevity and reliability in demanding environmental conditions.





# The Ok Engineers Advantage: Precision Manufacturing Excellence

## 30+ Years Expertise

CNC & Swiss-type brass turning delivering parts with tolerances as tight as  $\pm 0.01\text{mm}$  for critical applications.

## Advanced Machining

Multi-axis CNC centres producing complex geometries with superior surface finishes ( $R_a$  0.8 to  $3.2\text{ }\mu\text{m}$ ).

## Strict Quality Control

ISO 9001 & IATF 16949 certified processes with in-process inspections and CMM ensuring zero defects.

## Material Mastery

Expertise in C360 free-cutting brass and naval brass alloys optimised for machinability, corrosion resistance, and electrical conductivity.

## Premium Finishing

Comprehensive options including nickel, chrome, and tin plating to enhance durability and aesthetics.

# Partner with Ok Engineers

Your trusted brass turning specialist for precision-engineered solutions.

01

## Technical Collaboration

From DFM to mass production, reducing costs and lead times.

02

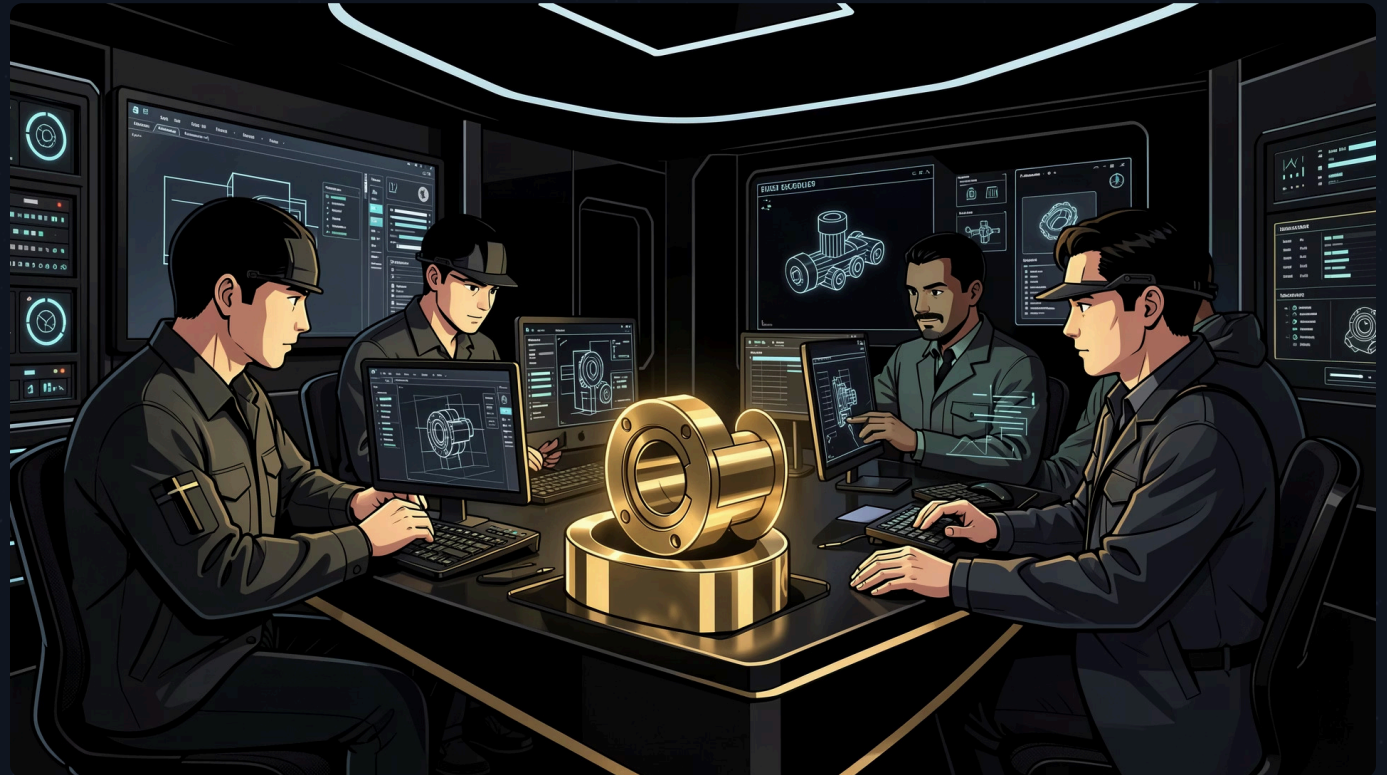
## Proven Track Record

Supplying medical, aerospace, automotive, and electronics industries.

03

## Innovation Commitment

Rapid prototyping with CNC turning accelerates development cycles.



**Contact us today** to transform your brass component needs into high-quality, precision-engineered solutions that exceed industry standards.